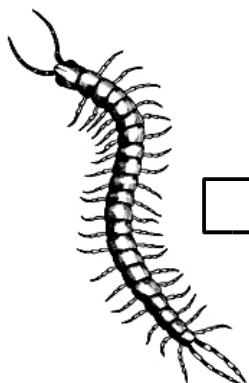


Creatures in the Soil



Centipede
 Reddish/orange
 3 inches
 Don't touch



Daddy Long legs
 Found on top of the ground. Be careful, the legs break easily.



Night Crawler
 6-10 inches



Snail



Millipede
 gray/black
 one inch in size
 harmless



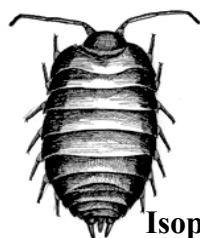
Red worm
 2-4 inches



Wireworm
 Beetle larva
 orange in color
 One inch in size



Fire Fly Larva
 1 inch
 dark color
 Green light





Isopod
 Gray
 1 inch



Cicada Larva
 White in color
 2 inches
 Found 2-6 inches beneath the ground.

Give yourself five points for starting a worm compost: _____
 Give yourself one point for each critter that you find: _____
 Total Possible Points 15 Your Total _____

 **Worm Eggs** _____
 **Whiteys** _____
Pinkies _____

