

# Amphibians and Reptiles of the Twin Cities

Illustrations by Jeanette Dickinson & Amelia Ladd  
From *Nature Seeker Workbook*



Chorus Frog

The chorus frog is the most common frog. But they are only a 1/2 in size and difficult to find. They sound like "crickets" in a pond.



Gray Tree

The gray tree frog can change colors from gray to green depending on its surroundings. They are two inches in size and have small suction cups on their feet which allows them to climb on windows and in the treetops (over thirty feet).



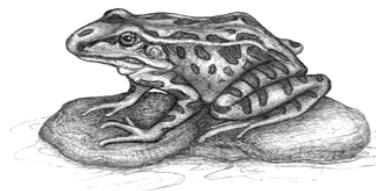
Wood Frog

The wood frog is 2-3 inches, brown with a black eye line. This frog is usually the first to visit the breeding ponds.



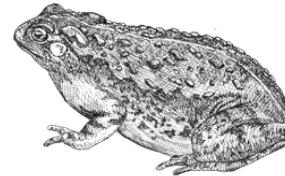
Spring Peeper

Spring peepers are approximately one inch in size. They are brown in color and have a distinctive "X" on their back.



Leopard Frog

The leopard frog is the most well known of all Minnesota frogs. It is a large green frog, three to four inches in size, with many black spots. Leopard frogs are exceptional jumpers.



American Toad

Toads travel to ponds in late April and begin breeding the first week of May. The beautiful "trilling" call of the males is the dominant night sound heard during the month of May.



Tiger Salamander

The tiger salamander a large yellow and black salamander (7-13 inches). They are found in many types of habitats including prairie ponds, farm ponds, and lakes.



Bullfrog

Bullfrogs can reach up to eight inches and are the largest frog found in Minnesota. The call of a male bullfrog is a low booming, "jug-a-rum".



Garter Snake

Garter snakes are a common snake. They can get up to three feet in size, and can be identified by the yellow line that runs along the top of the body.



Painted Turtle

The painted turtle is a common turtle seen on logs in ponds, lakes and marshes.

The snapping turtle is one of the largest turtles, weighing over 65 pounds. Snapping turtles are found in ponds and lakes with mud bottoms and aquatic weeds.



Snapping Turtle