

Nature Notes for Mystery Hike # 1

Station 1

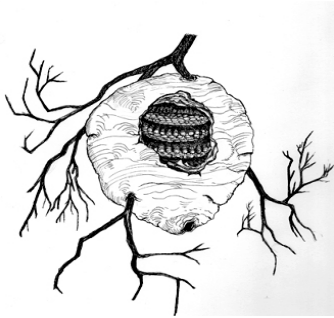


Illustration by Amelia Ladd

Bald-Faced Hornet Nest

The workers make the nest out of a type of paper by chewing wood and put it on the nest. Inside of the nest are the brood cells of the hornet where the larva are cared for by the workers. When the weather gets below 20°F, most of the workers and larvae die. The queen is the only one to survive, she will leave the nest and hibernate under a log before it gets cold. In the spring she will start a new hive at a different location.

Station 2

Robin Nest

The nest of robin is made of marsh grass and mud. It takes 2-4 days for both the male and female make the nest. There might be more than 300 blades of grass that they put together with mud after a rainstorm. The nest may be 5-20 in a bush or tree.



Station 3

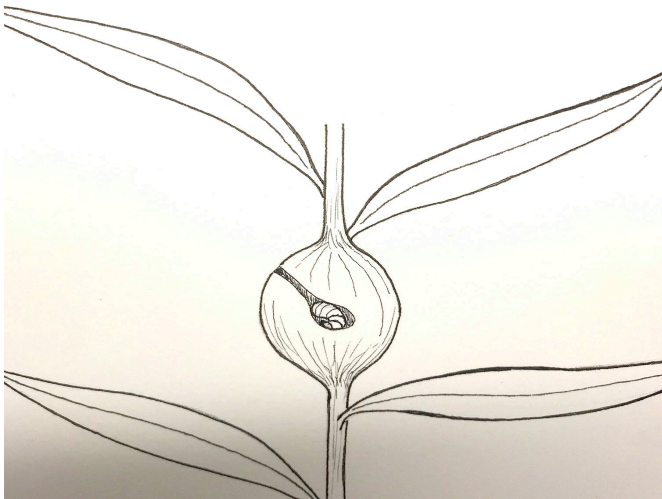


Illustration by Amelia Ladd

The Goldenrod Gall

In the spring the goldenrod gall fly lays an egg on the stem of the goldenrod. The larva hatches and chews the stem causing the plant to create the gall around the larva. It will remain inside its “gall home” till it hatches out in the spring as an adult. Some galls have holes in them. The larvae were eaten by chickadees and or downy woodpeckers.